

A photograph of a city street corner. In the foreground, a grey, perforated pillar stands on a cobblestone sidewalk. The pillar has a handle at the top. In the background, a white building with ornate architectural details is under renovation, with scaffolding visible. To the right, a brick building is also under renovation. The sky is overcast.

TRAFLEX

Pillar



About us

Traflux is a globally active **family business**. From the headquarters in Houthalen-Helchteren in Belgium, we develop and produce (semi-)underground waste containers. With superior materials, innovative designs, and cutting-edge techniques, we offer **waste solutions ranging from 100 to 5.000 liters**. And serve every sector in more than 30 countries.

We use the most advanced machines in our production plant which is almost 5.000 m² in size. We have 30+ years of knowledge in distribution all around the world. Moreover, Traflux has its own collection company in Belgium. We empty more than 1.000 containers daily. So we have first-hand experience in the field with our own drivers.

We take our **environmental responsibility**: 99% of all our materials are reusable. Therefore we use as many untreated materials as possible. We produce more electricity from our solar panels than we consume and we use gas to heat our plastic production machines to have a very small carbon footprint. Our containers are certified by the EN 13071 norm, our lifting bags are ISO 21898 certified, our wood is PEFC certified and we produce in accordance with ISO 9001.

TRAFLUX

Why choose a Pillar waste bin?

TRAFLEX

The Pillar is a street bin ideal for cities, municipalities, along sports fields or in recreational parks. From street bin to semi-underground container and from 100 litres to 200 litres. 100% tailormade in Belgium.

BENEFITS

- The Pillar waste bin is made of stainless steel and anchored with a concrete base. This makes it much stronger than a regular waste bin.
- The size of the insertion opening is designed to allow small waste (cans, paper bags, drink boxes...) to be easily deposited in the container. Larger waste products are kept out by the size of the insertion opening.
- The punched structure and graffiti-resistant layer protects the waste bin against vandalism, graffiti and stickers. The inner container is even fire-retardant.
- The innovative design gives the Pillar an elegant appearance. The standard color is gray, but you can personalize with different RAL colors.
- Enough of cigarette butts lying around? Then choose a built-in ashtray. This sturdy metal container is ingenious in its simplicity.

SAFE AND PRACTICAL

- The external shape of the container consists of two identical stainless steel parts anchored together with several sturdy hinges and a solid lock.
- The collection bin is equipped with ergonomic handles that ensure easy emptying of the Pillar even in rainy weather.

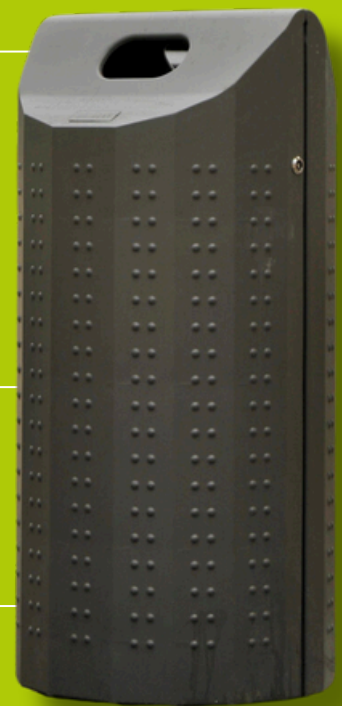
Built-in ashtray



Stainless steel protects against vandalism, graffiti & stickers



Personalize with different RAL colors



TRAFLEX

INSTALLATION

Pillar

Pillar placement is done in two phases. In the first phase, the far-anchor is created. Using a special drill, a perfectly round hole is made in the ground that is smaller than the plinth. This reduces the risk of frost damage. A sturdy foundation block (48kg) is placed in this hole, fitted with threaded anchor irons.

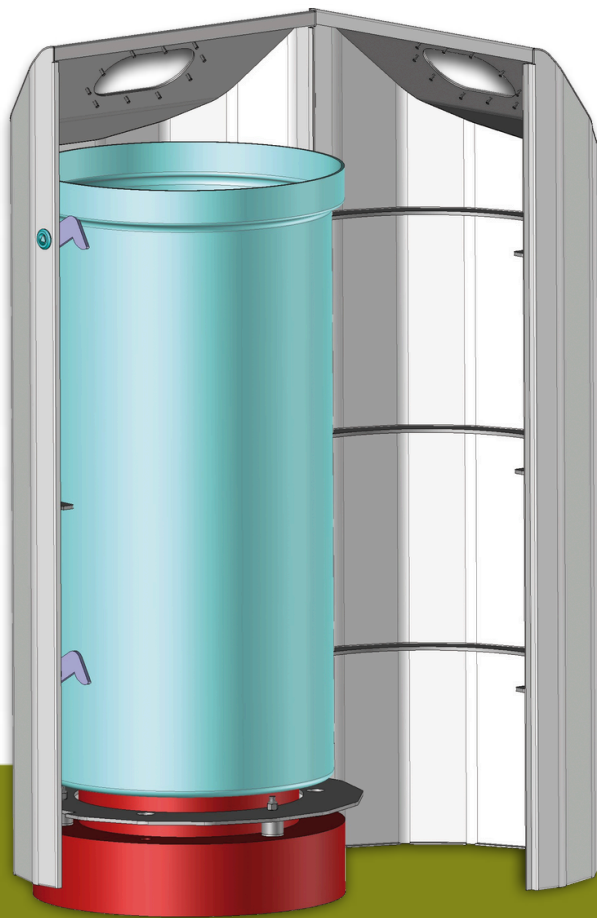
In the second phase, the socle of the Pillar is attached to the foundation block. This plinth is screwed on tightly. To prevent damage to the Pillar or the pavement and to dampen any operating noise, rubber dampers are placed between the base and the container.

Then the jacket of the Pillar is firmly attached to this concrete base. The sheath completely encloses the concrete plinth and the fasteners. Vandalism is thus reduced to a minimum. Finally, insert the fireproof plastic container (100 litres) and the Pillar is assembled.

Placement



Pillar - options and components

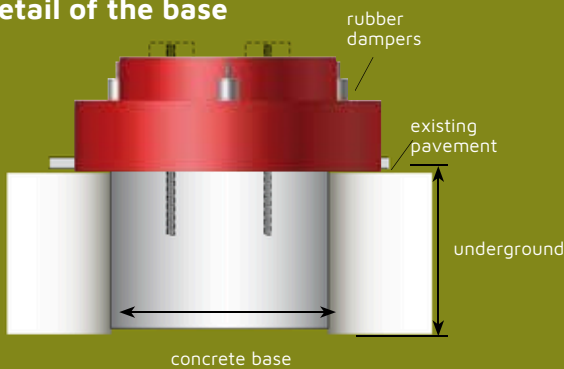


The surface of the Pillar features a punched structure. This structure, together with the resistant finishing coat, ensures that the Pillar is much better protected against vandalism, graffiti, stickers and pamphlets.



For sports grounds, leisure parks, city environments: the Pillar is grey as standard, but is available in different RAL colours upon request.

Detail of the base

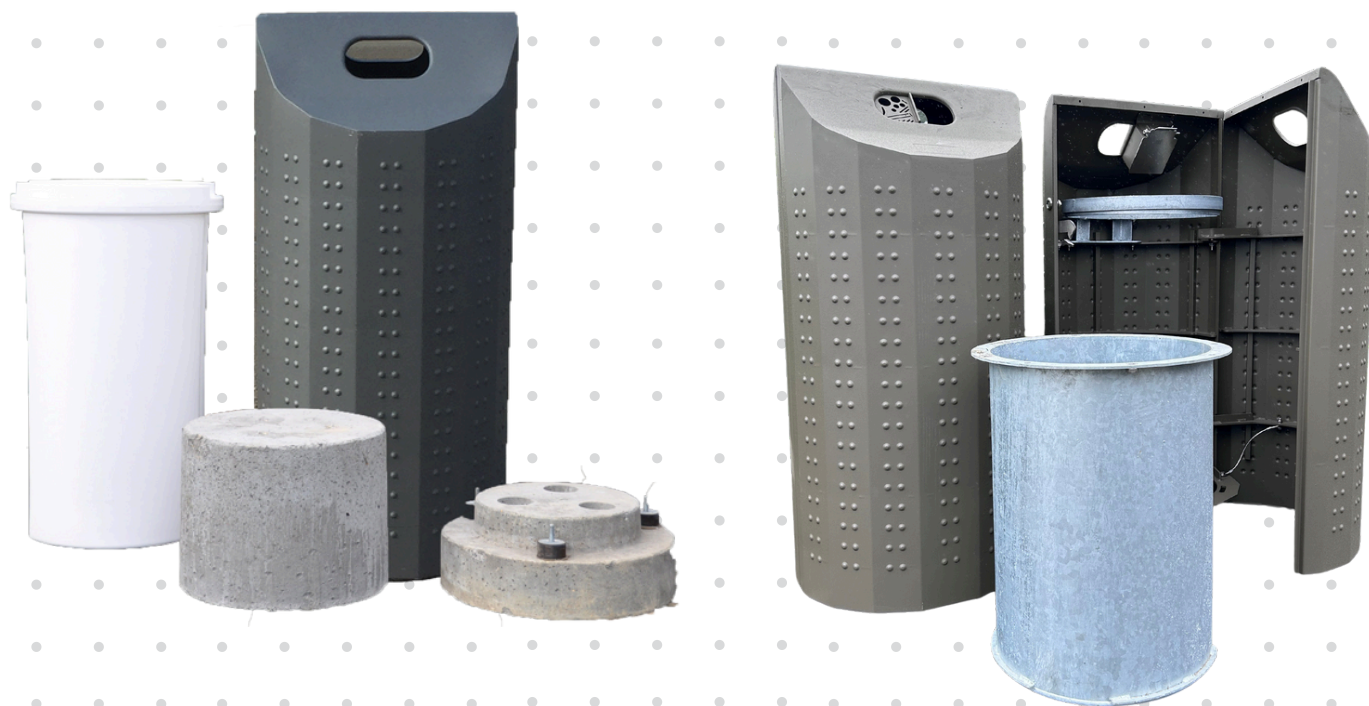


Emptying the Pillar is easy. In addition, the collection bin is equipped with ergonomic handles that ensure easy emptying of the Pillar even in rainy weather.

No cigarette ends on the street

That there are waste containers in public places is normal. But what about cigarette butts? Here too, Traflux offers an elegant solution: the Pillar with built-in ashtray. A simple but ingenious solution; The butts are collected in a sturdy metal container which is easy to empty by a simple action.





Pillar 100L standard model

Height (mm): 1060 mm

Width (mm): Ø 500 mm

Waste types:

- Mixed
- Paper
- Plastic
- Glass

Pillar 200L semi-underground model

Height (mm): 1060 mm (above ground)
+ 500 mm (underground)

Width (mm): Ø 500 mm

Waste types:

- Mixed
- Paper
- Plastic
- Glass

References

TRAFLEX



TRAFLEX

TRAFFLUX

YOUR WASTE OUR PASSION

TRAFLUX

Europark 1003, 3530 Houthalen-Helchteren

Belgium

Tel.: +32 11 51 62 77

Mail: info@traflux.com

Website: www.traflux.com

