

**TRAFLEX**



**RBin**





# About us

Traflux is a globally active **family business**. From the headquarters in Houthalen-Helchteren in Belgium, we develop and produce (semi-)underground waste containers. With superior materials, innovative designs, and cutting-edge techniques, we offer **waste solutions ranging from 100 to 5.000 liters**. And serve every sector in more than 30 countries.

We use the most advanced machines in our production plant which is almost 5.000 m<sup>2</sup> in size. We have 30+ years of knowledge in distribution all around the world. Moreover, Traflux has its own collection company in Belgium. We empty more than 1.000 containers daily. So we have first-hand experience in the field with our own drivers.

We take our **environmental responsibility**: 99% of all our materials are reusable. Therefore we use as many untreated materials as possible. We produce more electricity from our solar panels than we consume and we use gas to heat our plastic production machines to have a very small carbon footprint. Our containers are certified by the EN 13071 norm, our lifting bags are ISO 21898 certified, our wood is PEFC certified and we produce in accordance with ISO 9001.

**TRAFLEX**

# Why choose a semi-underground solution?

**TRAFLEX**

## Size does matter

It's clear from the figure below: size does matter. Less containers are needed, and the time needed to collect and remove waste is reduced, lowering the costs of both investment and installation. Big volume, small appearance.

## Design & Ergonomics

Design has had a significant influence on the use and feel of the ZBin. All its elements have been unified to create a coherent whole and we have ensured that the container can be safely and easily used by the end user.

## Environment

As we strongly believe that we as producer have an environmental responsibility. Made of concrete, extremely sturdy plastic and environmentally friendly materials. We keep logistic lines short with our production plant in Belgium. Which is also completely self-sufficient for electricity due to solar panels on our roof

## Quality & Reliability

We use exclusively high-quality materials selected for their durability. Our concrete shell has a high stability and we have chosen to use either aluminium or stainless steel to eliminate corrosion. Our containers are seamless and carry double-walled lids.

## Safe

Thanks to the inclusion of a barrier of at least 800mm in height, no gaping holes are left open as the semi-underground containers are emptied, protecting operators.

## Efficiency & Comfort

The efficiency of the semi-underground concept lies not only in how easily these containers are emptied, but also in the small amount of surface area needed to place them in the ground. In addition, our inner lid is much easier to open than those of alternative solutions.

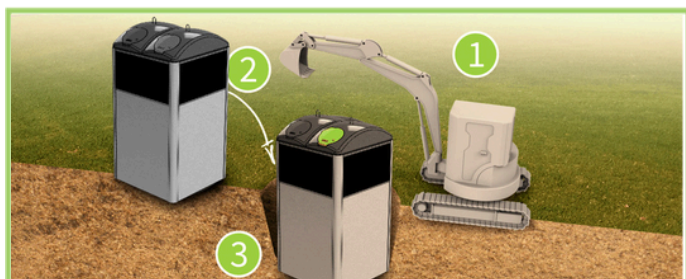


Comparison between 1x RBin, 6x 1100L wheelie bins and 35x 140L wheelie bins

**TRAFLEX**

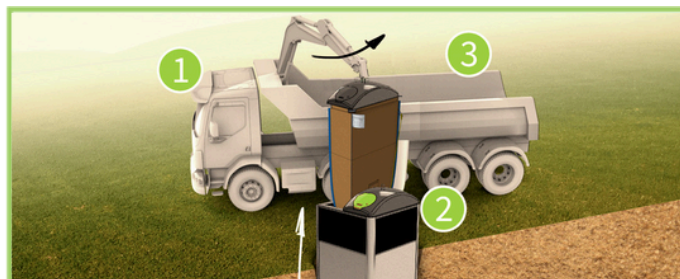


## Installation



1. Dig a hole      2. Place the RBin in the hole      3. Fill the hole

## Collection



1. Truck with crane      2. Lift the bag      3. Empty the bag

You start the **installation** by digging a hole into the ground for all the RBins you want to place into one location. The concrete pit is lifted from the transport truck into the hole. If everything is leveled and in a straight line, the bin is completed with decoration, lifting system and covers. Fill up the hole on the sides, and optionally do the finishing work on the top layer of the location. The RBin is ready to use.

There are several **lifting options** to empty the RBin, they mainly are dependent on the truck and crane you empty with. The truck comes up to the RBin. Locks up on the lifting system. The inner part of the waste container is being lifted out of the concrete pit, and emptied into the truck. When it's emptied the inner part is lifted back into the pit, and the RBin is ready to use again.

## Mix & Match

The advantage of the RBin is the flexibility with which you can install the containers in the street. Make the ideal set up that suits best the customers requirements on any location and take advantage of its versatility and efficient design.



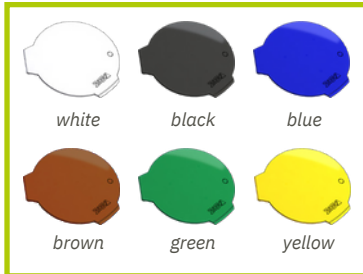


# RBin - options and components



## Options

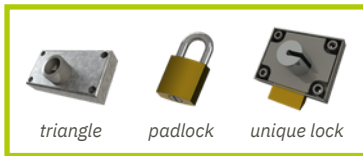
### Filling lid color options



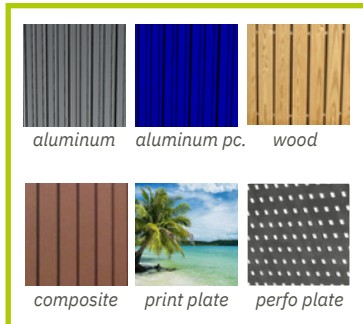
### Opening options



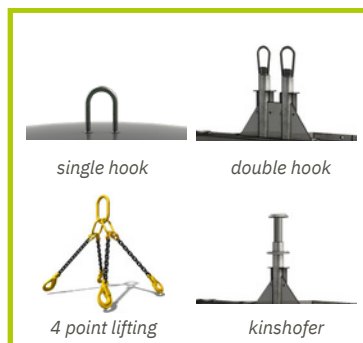
### Locking options



### Framing options

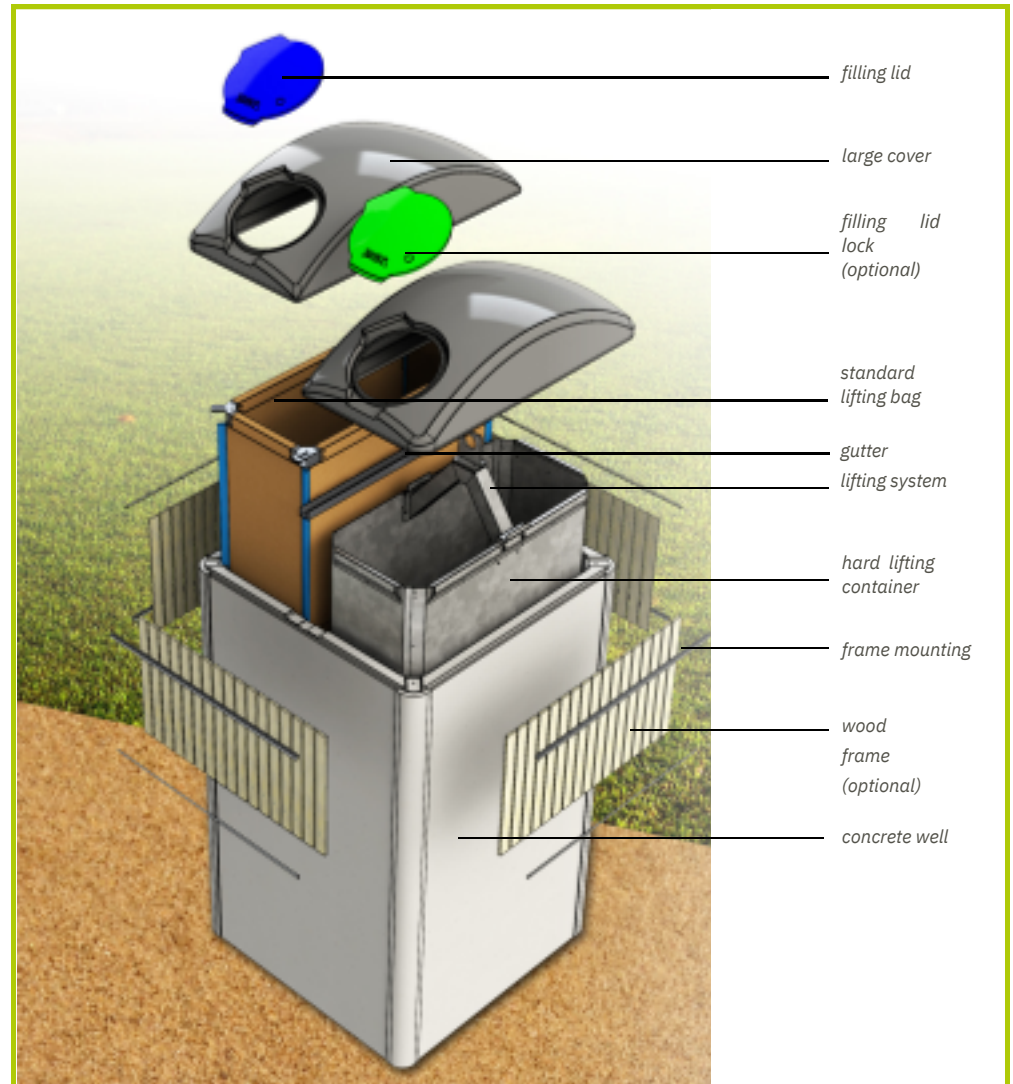


### Lifting options



## Components

### Exploded view

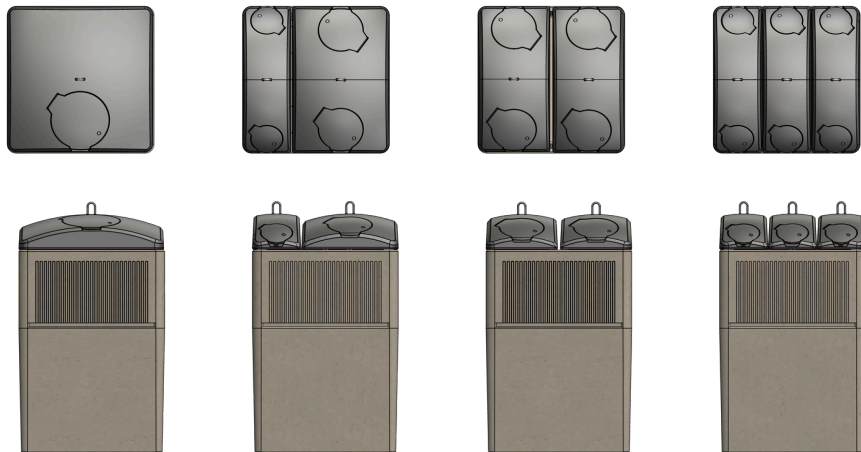


### Lifting bags/containers





We believe in the effectiveness of our semi-underground waste solutions. Next to our ZBin product range, we developed a solid rectangular concrete solution. The RBin combines the benefits of a strong concrete semi-underground well and a large variety of functional and esthetical options.



Type	5000L	1500L & 3500L	2 x 2500 L	3 x 1500 L
Height (mm)	2315mm	2315mm	2315mm	2315mm
Width (mm)	1660mm	1660mm	1660mm	1660mm
Weight (kg)	2750kg	2750kg	2750kg	2750kg
Fill volume (m3)	5 m3	3 m3 / 1.5 m3	2 x 2.5 m3	3 x 1.5 m3

### RBin 5000

The RBin Maxi Solo 5000L container is our largest volume. With our Solo container there is one fraction installed under the cover, that is lifted as one solution.

### RBin 1500 & 3500

If you want to combine smaller and larger volume capacities, you can go for our RBin 3000L and 1500L where you can combine 3 different fractions and choose their volume.

### RBin 2 x 2500

Due to our large capacity in our RBin concrete well, we are able to offer 2x volumes of 2500L. In our RBin 2x2500L solution you can combine 2 different fractions.

### RBin 3 x 1500

If you seek to have the most optimal multifraction container, you can go for our RBin 1500L where you can combine 3 different fractions in one RBin. This is perfect for a stand alone RBin.



# References

**TRAFUX**



**TRAFUX**



**TRAF**FLUX

# YOUR WASTE OUR PASSION

**TRAF**LUX

Europark 1003, 3530 Houthalen-Helchteren  
Belgium

Tel.: +32 11 51 62 77

Mail: [info@traflux.com](mailto:info@traflux.com)

Website: [www.traflux.com](http://www.traflux.com)

